

# The Tamarac® Test

## Waterless Filter Paper Blood Lead Test Kit

Instructions for filter paper specimen collection with skin surface lead removal products.

**CAUTION** must be used at all times to prevent contamination.  
**LEAD is EVERYWHERE**, including your hands and the patient's hands.

1. Remove supplies from kit and organize on clean paper towel on clean surface.
2. **Neatly** print **all** patient demographic, billing, and lab information on lab form. Apply pre-printed clinic ID label to lab form.
3. **Partially** remove filter paper card from plastic bag just enough to write the required data on filter paper card. Do **not** remove entire card from the plastic bag.
4. Kit user must wear protective gloves. Cleanse patient finger as follows:
  - apply **D-Lead® Wipe or Rinse Skin Cleaner** to small, unsealed, gauze pad
  - hold the selected finger and scrub the stick area (commonly the outside of the ring-fingertip) vigorously with the prepared gauze
  - remove **all** the soapy residue from the finger with the large, unsealed, gauze pad
  - **scrub** the stick area with the **D-Wipe® Towel**
  - **wipe** the stick area with the alcohol prep pad to disinfect
  - **dry** the stick area with the sealed (sterile) gauze pad
  - do **not** allow patient finger to touch anything
5. Remove filter paper card from plastic bag and place on clean paper towel. Use lancet to “stick” cleansed area of patient finger. Hold finger **above** the filter paper; allow first blood drop to **fall** at first dotted circle; allow second blood drop to **fall** at second dotted circle. Blood drops do not need to land in dotted circles. **Avoid touching the card to the patient finger.** You may collect a third blood spot anywhere in the unused filter paper area if you question the size of the first two spots. For duplicate analysis, **two** (2) blood spots (0.3 inch diameter) are required.



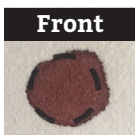
Identify stick site (commonly the outside of the ring-fingertip)



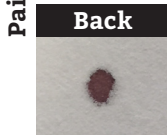
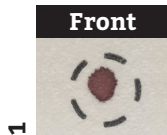
Allow blood drop to fall from patient finger onto filter paper

### Optimal Blood Spot

### Rejected Blood Spots – Quantity Not Sufficient (QNS)

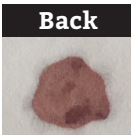


**ACCEPTABLE**



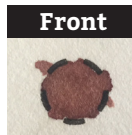
Pair 1

**REJECTED**



Pair 2

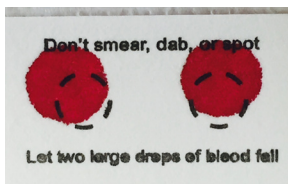
**REJECTED**



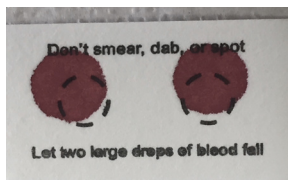
Pair 3

**REJECTED**

6. Gently cover filter paper card with second paper towel like a tent. Allow blood spots to **dry** noting color change from bright red to reddish-brown.



**Bright red  
blood spots  
(wet)**



**Reddish-  
brown  
blood spots  
(dry)**

7. Holding the filter paper sample card **opposite** the blood spots, re-insert the dry card into its small plastic bag so blood spot edge is inserted first and rests at **bottom** of plastic bag (just as it came to you). Seal the bag. You should **never** touch or handle the blood spot area of the card.

8. **Retain** the yellow copy of the lab form for your records. Place sealed filter paper sample on top of lab form and insert into prepaid envelope. Do **NOT** staple or paper clip filter paper bag to lab form. Up to **five** (5) filter paper sample and lab form pairs may be sent in the same envelope.

9. If you experience difficulty, please contact Tamarac® Medical.

## DO

- Encourage adequate patient **hydration** prior to blood stick
- Consider **warming** the stick site area to improve circulation prior to cleansing stick site.
- Thoroughly **cleanse** the stick site with all provided cleansers
- Use the provided lancet, or equivalent, designed for **maximum** blood flow
- Allow a **large** drop of blood to fall onto the filter paper area or to touch and saturate through the filter paper
- Attempt to obtain 2 large independent blood spots in **approximate** size to the dotted circles
- Send up to **five** (5) sample and lab form pairs in one envelope

## DON'T

- **Don't** use a **hemoglobin** specific lancet designed for minimum blood flow
- **Don't dab** blood from the finger, or allow finger to **touch** the filter paper, or **layer** blood onto filter paper
- **Don't** merely attempt to fill a blood spot circle; a large blood drop **MUST** fully **saturate** through the filter paper
- **Don't** insert **wet** blood spots into plastic bag; allow blood spots to **dry** first
- **Don't** touch or handle the **filter paper** area of the card
- **Don't staple** or **paper clip** sample bag to lab form
- **Don't** forget to stick barcode clinic ID **label** on every submitted lab form



**TAMARAC**  
M E D I C A L

*D-Lead® and D-Wipe® are registered trademarks of ESCA Tech, Inc.*

*© 2005-2022 Tamarac® Medical, Inc. All rights reserved.*

*To reorder kits, call 1-800-842-7069 • [tamaracmedical.com](http://tamaracmedical.com)*